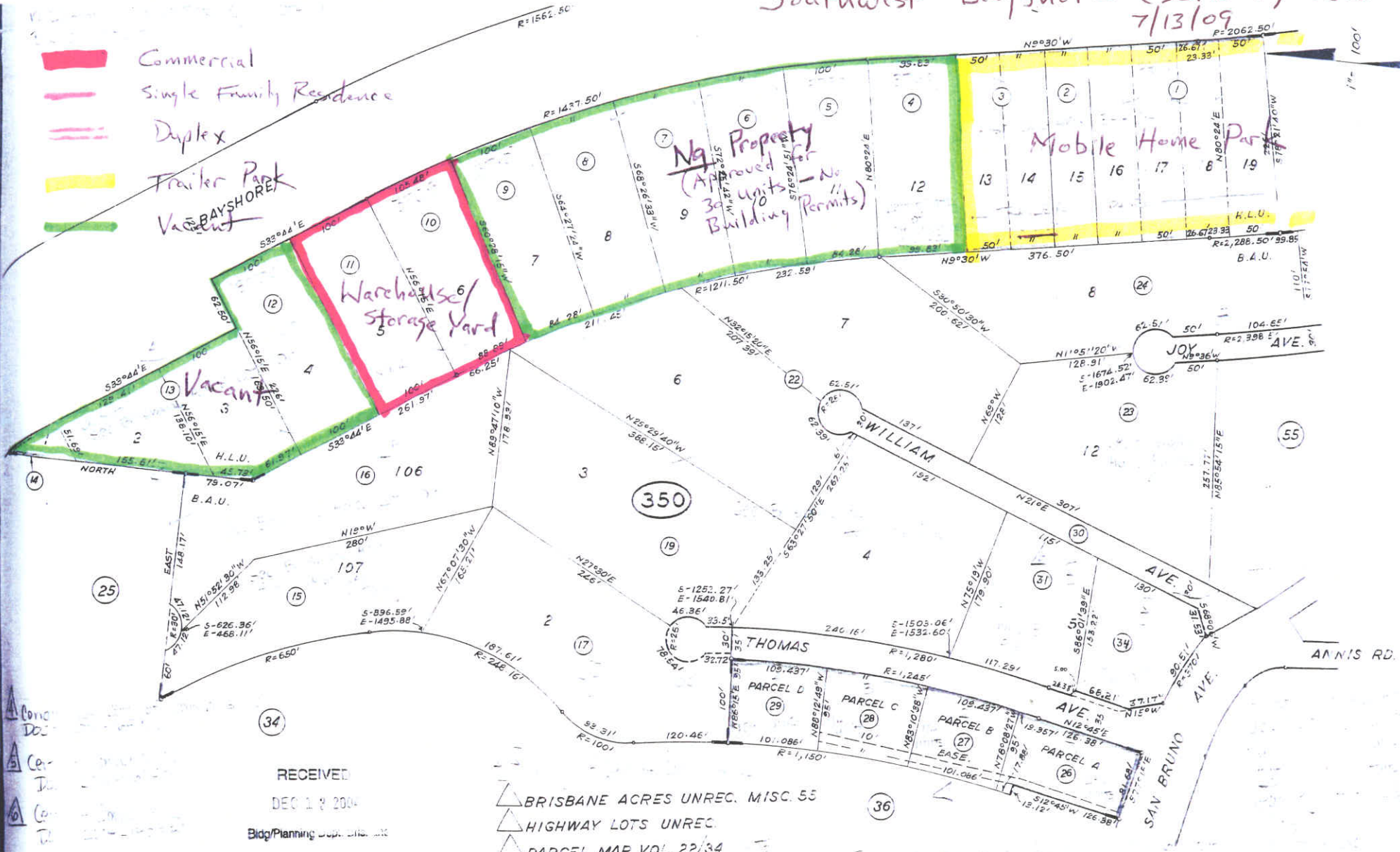


Southwest Bayshore (SCR0-1) Uses 7/13/09

- Commercial
- Single Family Residence
- Duplex
- Trailer Park
- Vacant

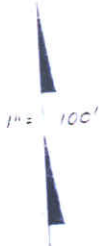


RECEIVED
DEC 1 2009

Bldg/Planning Dep. S.M.C.

- ▲ BRISBANE ACRES UNREC. MISC. 55
- ▲ HIGHWAY LOTS UNREC.
- ▲ PARCEL MAP VOL. 22/34

D.M. ASSESSOR'S MAP COUNTY OF SAN MATEO, CA.



NEIGHBORING PARCELS SHOWN DO NOT NECESSARILY CONSTITUTE LOCAL LOT OR MAP NUMBER SITES

- ▲ BRISBANE ACRES UNREC.
- ▲ HIGHWAY LOTS UNREC.
- ▲ PARCEL MAP VOL 50/25
- " " Vol. 71, page 75 (4050 Bayshore)